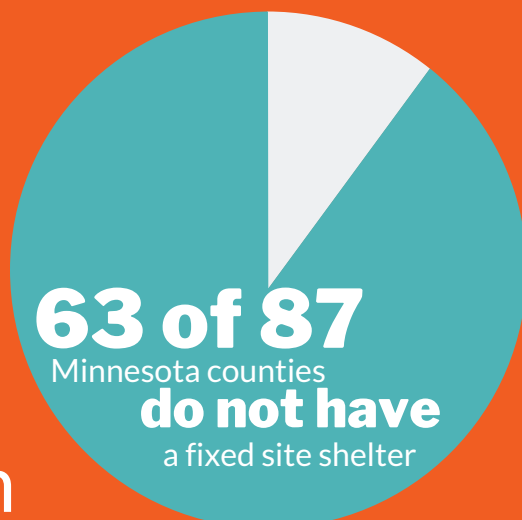


HF #1805

ESP

\$15 Million Investment to the Emergency Services Program

Emergency shelters are the starting point to gaining long-term stability. With lodging on a short-term basis (usually less than three months), emergency shelters provide a homeless individual or family with a clean, safe place to stay. Strengthening the statewide Emergency Services Program with an increase of \$15M per biennium is a smart investment because where we live impacts every aspect of our lives. When everyone has a place to call home, children learn, workers earn, seniors thrive, and communities prosper.



Shelter *leads to* housing stability

63%

of people experiencing homelessness identify as People of Color or Indigenous Peoples

2017 HUD Point in Time Count

Minnesota's unsheltered* population has increased by

41%

in four years.

2017 HUD Point in Time Count

6,000

estimated MN youth (0-24y) on their own experience homelessness on any given night

2015 Wilder Research

*Definition of an unsheltered person experiencing homelessness: resides in a place not meant for human habitation, such as cars, parks, sidewalks, abandoned buildings, or on the street.



Contact:

Fatima Moore, Director of Public Policy | 612-309-1635 | Fatima@mnhomelesscoalition.org | www.mnhomelesscoalition.org

MFIP

HF #799

SF #905

\$200/Month Increase to the Minnesota Family Investment Program

The Minnesota Family Investment Program (MFIP), is the state's welfare-to-work program. MFIP provides employment support and temporary cash assistance to children and their parents who are striving toward full-time employment. Many low-wage working parents do not qualify for unemployment insurance when they lose work. Instead, they must turn to MFIP for time-limited help.

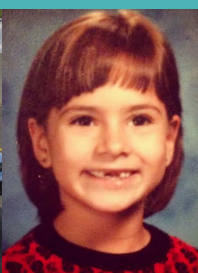
**More than 55,000 Minnesota children
accessing MFIP are living in extreme poverty while their
parents strive to satisfy rigid work and training requirements.**

**MFIP cash
assistance
hasn't
been
increased
since
1986**

16 US States
plus the District of
Columbia increased
TANF benefits in the
past two years

The maximum
level of
assistance for a
family of 3 is
\$532/month

Minnesota is
1 of 3
states that has
NOT increased the
TANF cash grant in
33 years



Contact:

Fatima Moore, Director of Public Policy | 612-309-1635 Fatima@mnhomelesscoalition.org | www.mnhomelesscoalition.org