

MFIP

HF #799

SF #905

\$200/Month Increase to the Minnesota Family Investment Program

The Minnesota Family Investment Program (MFIP), is the state's welfare-to-work program. MFIP provides employment support and temporary cash assistance to children and their parents who are striving toward full-time employment. Many low-wage working parents do not qualify for unemployment insurance when they lose work. Instead, they must turn to MFIP for time-limited help.

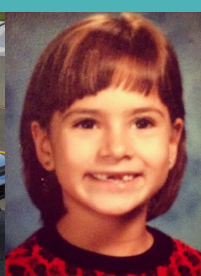
**More than 55,000 Minnesota children
accessing MFIP are living in extreme poverty while their
parents strive to satisfy rigid work and training requirements.**

**MFIP cash
assistance
hasn't
been
increased
since
1986**

16 US States
plus the District of
Columbia increased
TANF benefits in the
past two years

The maximum
level of
assistance for a
family of 3 is
\$532/month

Minnesota is
1 of 3
states that has
NOT increased the
TANF cash grant in
33 years



Contact:

Fatima Moore, Director of Public Policy | 612-309-1635 Fatima@mnhomelesscoalition.org | www.mnhomelesscoalition.org